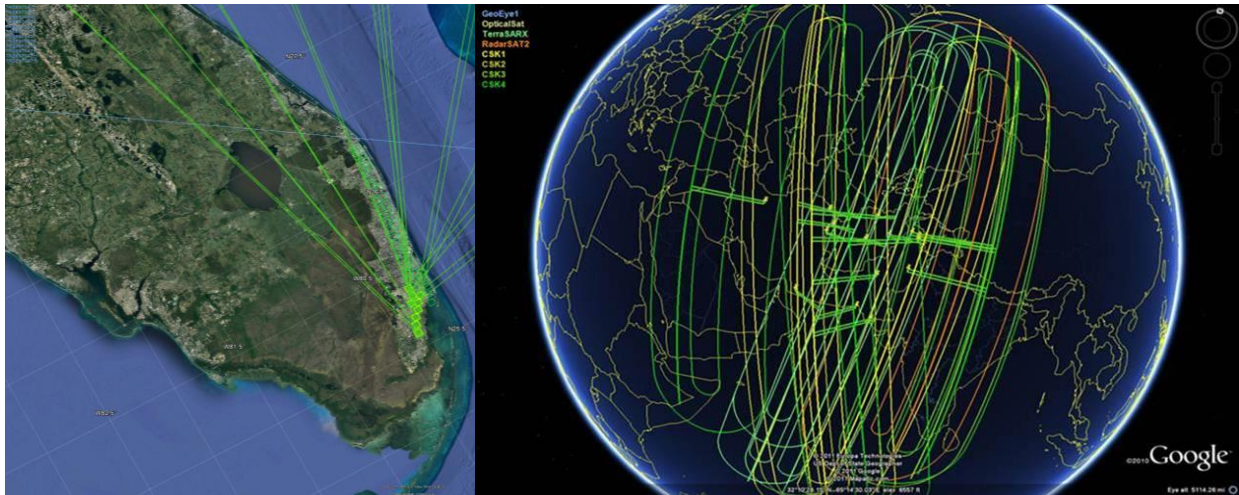


Trident Pacific Engineers received CPAW Training in Virginia on Jan 5-11, 2018
 CPAW (Collection Planning and Analysis Workstation) is an off the shelf satellite scheduler and planning software. CPAW supports multiple satellites, multiple targets, target requirements, ground stations and storage modeling.



CPAW Workstation - default

Control/Status

CP ID: DEMCSAT1_20100501000000-20100701000000

CP Score: 10445.269 Build Status: Complete

Spacecraft ID: DEMCSAT1 Scans Included: 24 Violation: [Details]

Grid Filter: DEMCSAT1

Weather: No weather applied

Uplink Start: 2010-05-15T02:55:39.600Z

Window Stop: 2010-05-15T03:11:28.600Z

Map Request: [Auto Request] Pathfinder: [Timeout (min): 1]

Index	Task Order	Strip	Priority	Area	Score	Status	CCF	Max CC	Strip Angle	Off Nadir	GSD	Stereo	Imaging Start Time	Duration	Start	Start ONA	End ONA	Access	Access Start Time	Access End Time	
1	Image10	Image10_0	120	939	426	Available	-1	100	0.0	0.0	-	-	2010-05-15T03:03:00.000Z	7.6	N	12.266	11.282	2010-05-15T03:02:08.400Z	2010-05-15T03:04:05.800Z	2010-05-15T03:02:08.400Z	2010-05-15T03:04:05.800Z
2	Image10	Image10_1	120	857	414	Available	-1	100	0.0	0.30	-	-	2010-05-15T03:03:04.200Z	8.8	N	13.338	12.431	2010-05-15T03:02:11.800Z	2010-05-15T03:04:05.200Z	2010-05-15T03:02:11.800Z	2010-05-15T03:04:05.200Z
3	Image10	Image10_2	120	760	401	Available	-1	100	0.0	0.30	-	-	2010-05-15T03:03:08.400Z	6.2	N	14.38	13.583	2010-05-15T03:02:11.800Z	2010-05-15T03:04:04.400Z	2010-05-15T03:02:11.800Z	2010-05-15T03:04:04.400Z
4	Image10	Image10_3	120	663	388	Available	-1	100	0.0	0.30	-	-	2010-05-15T03:03:02.600Z	5.4	N	15.424	14.736	2010-05-15T03:02:13.800Z	2010-05-15T03:04:03.800Z	2010-05-15T03:02:13.800Z	2010-05-15T03:04:03.800Z
5	Image10	Image10_4	120	566	375	Available	-1	100	0.0	0.30	-	-	2010-05-15T03:03:07.000Z	4.6	N	16.45	15.967	2010-05-15T03:02:15.800Z	2010-05-15T03:04:02.800Z	2010-05-15T03:02:15.800Z	2010-05-15T03:04:02.800Z
6	Image10	Image10_5	120	586	374	Available	-1	100	0.0	0.30	-	-	2010-05-15T03:03:07.000Z	4.6	N	17.517	16.953	2010-05-15T03:02:17.800Z	2010-05-15T03:04:02.000Z	2010-05-15T03:02:17.800Z	2010-05-15T03:04:02.000Z
7	Image11	Image11_0	120	1337	486	Available	-1	100	0.0	0.30	-	-	2010-05-15T03:02:08.800Z	10.8	N	3.034	1.48	2010-05-15T03:01:19.200Z	2010-05-15T03:03:18.200Z	2010-05-15T03:01:19.200Z	2010-05-15T03:03:18.200Z
8	Image11	Image11_1	120	1528	485	Included	-1	100	0.0	0.30	846	-	2010-05-15T03:02:58.600Z	10	N	27.508	25.28	2010-05-15T03:01:08.000Z	2010-05-15T03:03:17.400Z	2010-05-15T03:01:08.000Z	2010-05-15T03:03:17.400Z
9	Image11	Image11_2	120	1700	515	Included	-1	100	0.0	0.30	763	-	2010-05-15T03:02:37.200Z	12.6	N	19.95	17.647	2010-05-15T03:01:05.800Z	2010-05-15T03:03:16.400Z	2010-05-15T03:01:05.800Z	2010-05-15T03:03:16.400Z
10	Image11	Image11_3	120	1601	511	Included	-1	100	0.0	0.30	768	-	2010-05-15T03:02:46.000Z	13	N	10.509	9.281	2010-05-15T03:01:05.800Z	2010-05-15T03:03:15.200Z	2010-05-15T03:01:05.800Z	2010-05-15T03:03:15.200Z
11	Image11	Image11_4	120	1423	387	Available	-1	100	0.0	0.30	-	-	2010-05-15T03:02:14.800Z	3.6	N	7.115	6.933	2010-05-15T03:01:16.800Z	2010-05-15T03:03:14.000Z	2010-05-15T03:01:16.800Z	2010-05-15T03:03:14.000Z
12	Image12	Image12_0	120	980	436	Available	-1	100	0.0	0.30	-	-	2010-05-15T03:04:31.800Z	8	N	8.39	7.298	2010-05-15T03:03:34.800Z	2010-05-15T03:05:36.800Z	2010-05-15T03:03:34.800Z	2010-05-15T03:05:36.800Z
13	Image12	Image12_1	120	972	476	Included	-1	100	0.0	0.30	818	-	2010-05-15T03:05:18.000Z	6.8	N	20.035	23.49	2010-05-15T03:03:35.800Z	2010-05-15T03:05:36.800Z	2010-05-15T03:03:35.800Z	2010-05-15T03:05:36.800Z
14	Image12	Image12_2	120	963	453	Included	-1	100	0.0	0.30	78	-	2010-05-15T03:05:49.000Z	7.2	N	19.204	17.963	2010-05-15T03:03:37.800Z	2010-05-15T03:05:36.800Z	2010-05-15T03:03:37.800Z	2010-05-15T03:05:36.800Z
15	Image12	Image12_3	120	954	426	Included	-1	100	0.0	0.30	728	-	2010-05-15T03:04:47.800Z	7.8	N	14.43	13.062	2010-05-15T03:03:38.200Z	2010-05-15T03:05:36.800Z	2010-05-15T03:03:38.200Z	2010-05-15T03:05:36.800Z
16	Image12	Image12_4	120	591	393	Included	-1	100	0.0	0.30	717	-	2010-05-15T03:04:38.200Z	5	N	12.468	11.815	2010-05-15T03:03:42.800Z	2010-05-15T03:05:36.800Z	2010-05-15T03:03:42.800Z	2010-05-15T03:05:36.800Z
17	Image13	Image13_0	120	601	374	Included	-1	100	0.0	0.30	796	-	2010-05-15T03:04:09.000Z	4.4	N	23.036	22.148	2010-05-15T03:02:54.800Z	2010-05-15T03:04:31.000Z	2010-05-15T03:02:54.800Z	2010-05-15T03:04:31.000Z
18	Image13	Image13_1	120	1150	440	Included	-1	100	0.0	0.30	841	-	2010-05-15T03:04:18.800Z	7.6	N	26.78	25.062	2010-05-15T03:02:56.800Z	2010-05-15T03:04:29.800Z	2010-05-15T03:02:56.800Z	2010-05-15T03:04:29.800Z
19	Image13	Image13_2	120	1516	490	Available	-1	100	0.0	0.30	-	-	2010-05-15T03:03:45.200Z	11.6	N	20.737	19.342	2010-05-15T03:02:58.200Z	2010-05-15T03:04:43.800Z	2010-05-15T03:02:58.200Z	2010-05-15T03:04:43.800Z
20	Image13	Image13_3	120	1601	499	Available	-1	100	0.0	0.30	-	-	2010-05-15T03:03:46.000Z	12.2	N	21.819	20.371	2010-05-15T03:03:00.200Z	2010-05-15T03:04:43.000Z	2010-05-15T03:03:00.200Z	2010-05-15T03:04:43.000Z
21	Image13	Image13_4	120	1680	508	Available	-1	100	0.0	0.30	-	-	2010-05-15T03:03:46.000Z	12.8	N	22.876	21.585	2010-05-15T03:03:02.400Z	2010-05-15T03:04:42.000Z	2010-05-15T03:03:02.400Z	2010-05-15T03:04:42.000Z
22	Image13	Image13_5	120	1651	503	Available	-1	100	0.0	0.30	-	-	2010-05-15T03:03:47.000Z	12.6	N	23.823	22.383	2010-05-15T03:03:05.800Z	2010-05-15T03:04:41.400Z	2010-05-15T03:03:05.800Z	2010-05-15T03:04:41.400Z
23	Image13	Image13_6	120	965	417	Available	-1	100	0.0	0.30	-	-	2010-05-15T03:03:53.200Z	7.4	N	24.185	23.384	2010-05-15T03:03:13.800Z	2010-05-15T03:04:40.200Z	2010-05-15T03:03:13.800Z	2010-05-15T03:04:40.200Z
24	Image13	Image13_7	120	287	332	Included	-1	100	0.0	0.30	-	-	2010-05-15T03:03:58.000Z	2.2	N	24.58	24.344	2010-05-15T03:03:21.800Z	2010-05-15T03:04:38.800Z	2010-05-15T03:03:21.800Z	2010-05-15T03:04:38.800Z
25	Image14	Image14_0	120	2085	559	Included	-1	100	0.0	0.30	789	-	2010-05-15T03:05:38.200Z	15	N	22.096	20.243	2010-05-15T03:04:54.200Z	2010-05-15T03:06:40.800Z	2010-05-15T03:04:54.200Z	2010-05-15T03:06:40.800Z
26	Image14	Image14_1	120	2098	556	Available	-1	100	0.0	0.30	-	-	2010-05-15T03:05:20.000Z	15.6	N	23.859	22.038	2010-05-15T03:04:39.800Z	2010-05-15T03:06:38.800Z	2010-05-15T03:04:39.800Z	2010-05-15T03:06:38.800Z
27	Image14	Image14_10	120	2085	556	Available	-1	100	0.0	0.30	-	-	2010-05-15T03:05:20.000Z	15.6	N	26.433	24.713	2010-05-15T03:04:52.800Z	2010-05-15T03:06:38.800Z	2010-05-15T03:04:52.800Z	2010-05-15T03:06:38.800Z
28	Image14	Image14_11	120	1083	429	Available	-1	100	0.0	0.30	-	-	2010-05-15T03:05:17.800Z	8.2	N	27.21	26.351	2010-05-15T03:04:46.800Z	2010-05-15T03:06:36.800Z	2010-05-15T03:04:46.800Z	2010-05-15T03:06:36.800Z

Events

2010-05-15T13:39:49.868Z INFO : Score from run 4 was 0 with 0 included scans, 0 requested.

2010-05-15T13:39:49.868Z INFO : Score from run 5 was 0 with 0 included scans, 0 requested.

2010-05-15T13:39:49.870Z INFO : Score from run 6 was 0 with 0 included scans, 0 requested.

2010-05-15T13:39:49.882Z INFO : Algorithm 6 returned missing solution.

2010-05-15T13:39:49.884Z INFO : Algorithm 6 returned missing solution.

2010-05-15T13:39:50.024Z INFO : Failed algorithm for window "OB_(0)".

2010-05-15T13:39:50.024Z INFO : CP build completed successfully.

Training Objectives

- Introduce and familiarize Trident Pacific Engineers with Orbit Logic's CPAW Software. Collection Planning and Analysis Workstation (CPAW)
- Provide hands-on training time with CPAW
- Begin conducting simple and parametric analysis within CPAW & STK
- Provide Trident Pacific Engineers the means to independently research, plan and analyze image collection planning